

Appendixes

This page is intentionally left blank

Appendix A. Description of Data Sources and Methods

Data Sources

Morbidity (Hospitalization) Data

Injury hospitalization data were obtained from the State of Alaska Trauma Registry (ATR). The ATR collects data on the most seriously injured patients in Alaska and the treatment they received. The ATR collects data from all 24 of Alaska's acute care hospitals. The criteria for inclusion in the registry are patients with injuries who are admitted to an Alaska hospital, held for observation, transferred to another acute care hospital, or declared dead in the emergency department, and for whom contact with the health care system occurred within 30 days of injury.

More information about the Alaska Trauma Registry may be found at:
<http://dhss.alaska.gov/dph/Emergency/Pages/trauma/registry.aspx>.

Mortality (Death) Data

The State of Alaska Bureau of Vital Statistics provided data from death certificates for Alaska Native people statewide from 1992 to 2011. Only injury deaths that occurred in Alaska were included. If someone was injured in Alaska and then transported to Seattle where they subsequently died, the fatality data were not included in this report. As a result, this report may underestimate injury death frequencies and rates, but not to a level of significant impact. The Alaska Bureau of Vital Statistics was informed of only 16 injury deaths occurring from 2002-2011 outside of Alaska for Alaska Native people residing in Alaska.

More information about the Alaska Bureau of Vital Statistics may be obtained at:
<http://dhss.alaska.gov/dph/VitalStats/Pages/default.aspx>.

Population Data

The Alaska Department of Labor and Workforce Development (AKDOL) produces statistics about Alaska's population including the annual population estimates used to calculate rates for this report. AKDOL estimates population characteristics (age, race, gender, region of residence) for each year throughout a decade by using population counts from the decennial census data before and after each decade and then making adjustments. AKDOL adjusts the census numbers, using administrative records including birth certificates, death certificates, income tax returns, Permanent Fund applications, school enrollment and driver's licenses, to more accurately estimate the population of each year between censuses.

More information about the AKDOL's population statistics may be found at:
<http://labor.alaska.gov/research/pop/popest.htm>.

Determination of the Cause of Injury Categories

The categories used to classify the external causes of injuries for this report were primarily based on the 1) injury frequency and 2) International Classification of Diseases (ICD) version used by the source. As leading causes of injury death differed from those of injury hospitalization, and the ICD versions used for hospitalizations and deaths differed, different categories were selected for hospitalizations and deaths.

Appendix A. Description of Data Sources and Methods (continued)

Morbidity (Hospitalization) Data

The Alaska Trauma Registry used ICD-9 codes for all of the data received for this report. The ICD-9 External Cause of Injury matrix developed by ANTHC to categorize injury hospitalizations by cause for this report is in Appendix C of this document. Due to the uniqueness of modes of travel in Alaska as well as unique environmental conditions, two modifications were made to the matrix to better fit Alaskan injury hospitalizations. Below is a description of the modifications.

- “Snowmachine” injuries (E820) were separated into their own category from “Other Transport”.
- “ATV” injuries (E821) were separated into their own category from “Other Transport”.

To improve the accuracy of the data analysis, the narrative fields and International Classification of Diseases (ICD) codes of all cases with a mechanism classification of "OTHER" in the ATR database were reviewed to determine if the cause or mechanism could be more specifically classified. State of Alaska staff overseeing the ATR indicated that the ICD code and narrative fields in the database had the same level of accuracy. Where the ICD code and narrative fields disagreed, the narrative was used to determine the mechanism for this report, since for most cases it had more detail than the ICD code.

The narratives of all transportation categories were also reviewed to re-categorize them by the larger vehicle (if more than one transportation mode was involved) rather than the transportation mode of the patient at the time of the incident. The order of transportation modes used (from largest to smallest) was: motor vehicle (automobile, bus, truck), snowmachine, all-terrain vehicle, bicycle, and pedestrian.

The review of the data from 1992 to 2011, all races, led to 665 cases (0.75% of the total) that were grouped under a different mechanism or cause than identified by their ICD-9 code in the ATR data. The same reassignment was not done for the mortality data because a detailed narrative field was not included.

Mortality (Death) Data

The Bureau of Vital Statistics used ICD-9 codes through December, 1998, and then changed to ICD-10 codes in January, 1999. ANTHC developed ICD-9 and ICD-10 External Cause of Injury matrices to categorize injury deaths by cause for this report, described in Appendix E.

Priorities for injury prevention in Alaska are based on injury frequencies. As a result, certain activities were separated into their own categories to better describe Alaskan injury death. These included the following:

- “Excessive cold” was separated into its own cause of death category from “Natural/Environmental”: X30-X31.
- “Off-road Vehicle” was separated into its own category from “Other Transport”: E820.0-821.9 and V86.0-86.9.
- Transport-related drowning deaths (V90, V92) were moved from the “Other Transport” category and added to the “Drowning” category. (See Appendix E for all codes assigned to drowning.)

Between 2007 and 2009 the World Health Organization discontinued the ICD-10 codes titled “Mental

Appendix A. Description of Data Sources and Methods (continued)

and behavioral disorders due to use of” alcohol or specific drug class, “acute intoxication”. Subsequently, “acute intoxication” cases were predominantly coded as X45 (“Accidental Poisoning”) or X60-X65 (“Intentional self poisoning using alcohol or drugs”). Prior to the discontinuation, “acute intoxication” cases were considered behavioral health cases and not included in injury surveillance. Injury data may show a substantial increase in unintentional poisonings and suicide attempts and self harm , so comparing data before and after the period of the coding change (2007-2009) should be done with caution.

Poisoning Data

All poisoning deaths, for both adults and children, are included in the Bureau of Vital Statistics data. The Alaska Trauma Registry reports all poisoning hospitalizations for patients under age 18. Until January, 2011, the ATR also reported intentional, occupational, and inhalational poisonings for adults. On January 1, 2011, the ATR discontinued reporting intentional poisoning hospitalizations for adults.

Because poisoning is a substantial proportion (75%) of the means used for suicide attempts and self harm for Alaska Native people, the sections on suicide attempts and self harm hospitalizations, pages 34 to 35, included data through 2010 only to ensure rate accuracy.

Calculation of Rates

All rates in this report were age-adjusted unless the data were annotated or stratified by age. Rates were age-adjusted to the 2000 U.S. standard population obtained from the U.S. Census. The regional maps in the Injury Hospitalization and Injury Death sections indicate whether there is a statistically significant difference between each regional rate for 2002-2011 data and the statewide AN/AI rate. Rates in the Access to Care section, pages 76 to 77, could not be age-adjusted because that level of population data segmentation was not available.

The rate ratio indicates whether the injury risk of the population of interest is greater (>1) or less (<1) than the statewide AN/AI population. In the regional profile section of this report, the regional AN/AI rates were compared to statewide AN/AI rates for calculating rate ratios. Regional non-Native rates were not used for comparison because the injury frequencies for non-Natives in several regions over this time period were below the rate-calculation threshold (10 for deaths and 20 for hospitalizations).

Population Data

“Bridged” population estimates from the Alaska Department of Labor were used as the denominator to calculate the mortality rates. To compare data over time, bridged estimates were necessary to adjust for the option added in the 2000 Census which allowed selection of multiple races rather than one. For the time trends, four years of population (denominator) and occurrence (numerator) data were summed for each time period to calculate the aggregate rates for each time period.

To calculate age-adjusted rates, the number of deaths for each ten-year age group (from 0-9 to 70+ years) was divided by the total population for that age group over the corresponding time interval. Those unadjusted rates were multiplied by the proportion that age group made up of the 2000 U.S. standard population. Those products were summed to get the overall age-adjusted rate for each time interval. All injury rates presented in this report were age-adjusted, except where annotated or age groups were used.

Appendix A. Description of Data Sources and Methods (continued)

Regional Classification

Maps within this report provide injury death and hospitalization rates by region. The village where each injury occurred (rather than the village of residence) was used to determine the region for the calculation of rates. For example, an injury involving a resident of Bethel that was injured in a motor vehicle crash in Anchorage would be categorized as an Anchorage/Mat-Su injury.

Many tribal health organization (THO) service areas are geographically small, with corresponding low numbers for population, injury deaths and hospitalizations. To obtain populations and injury frequencies large enough to calculate rates, several THO service areas were combined into one region, creating a total of twelve regions. The regions are defined on page 45, at the start of the Regional Profile section of this report.

Death Data

Rates per 100,000 population were calculated for injury deaths. Death rates were not calculated for any category where the number of deaths was fewer than ten. Injury death rates based on a small number of deaths (at least 10 but less than 20) were flagged (**) because they may be unstable and should be interpreted with caution.

Hospitalization Data

Rates per 10,000 population were calculated for injury hospitalizations. Rates were not calculated where the number of hospitalizations in a category was less than twenty.

Other Notes

Alaska Native People and American Indian People

Throughout this document, both the term “Alaska Native” and the abbreviation “AN/AI” are used to refer to all Alaska Native and American Indian people who reside in Alaska.

Alcohol-related and Drug-related Injury Hospitalizations

This report presents information on alcohol- and drug-related injury hospitalizations. To be included as alcohol- or drug-related in the ATR, there must be a positive blood alcohol or drug test or breathalyzer result within six hours of injury or documentation in the medical record that alcohol or illicit drugs were involved. If a case does not meet these criteria, it will not be recorded as alcohol- or drug-related in the ATR.

Cases where someone other than the patient was involved in causing the injury and under the influence of alcohol or drugs would not be recorded as alcohol- or drug-related in the ATR. This may lead to underestimates of the number of alcohol- or drug-related injury hospitalizations.

n Values

In the data tables in Appendix B, there may be variation in the n values listed for the total number of injuries in each category. This indicates that one of the parameters used on that table (gender, age, region) was missing for a small number of cases. These cases were still included to provide as comprehensive a picture of Alaska Native injuries as possible.

Appendix A. Description of Data Sources and Methods (continued)

Percentages

Calculations for percentages were rounded to one decimal place, therefore total percentages may not add up to 100.0%.

Statistical Significance

Differences between comparison rates and percentages were considered to be significantly different if the z-value was greater than the critical value at the 0.05 significance level, 1.96, and annotated in the report as $p < 0.05$.



Photo by H. Strayer

Appendix B. Data Tables

Table B-1. Intentional Injury Death Rate^{††} by Region, Alaska Native People, 2002-2011

Data Source: Alaska Bureau of Vital Statistics

	n	Rate ††
Norton Sound *	75	97.4
Northwest Arctic *	50	74.8
Yukon-Kuskokwim *	156	72.2
Arctic Slope	30	58.2
Interior	67	50.4
Anchorage and Matanuska-Susitna *	137	42.4
Bristol Bay	16	33.3**
Kenai Peninsula *	15	29.3**
Southeast	40	28.9
Aleutians and Pribilofs	5	¶
Copper River/Prince William Sound	7	¶
Kodiak	5	¶
All Alaska, Non-Native only	1,221	21.4
All Alaska, AN/AI only	603	51.6

†† Death rate per 100,000 age-adjusted to 2000 US standard population

* Regional rate is significantly different from the AN/AI statewide rate, $p < 0.05$

** Rate is based on 10-19 deaths and should be interpreted with caution

¶ Rate not calculated due to small number of deaths (<10)

Appendix B. Data Tables (continued)**Table B-2. Intentional Injury Death Rate^{††} by Gender, Race and Year, 1992-2011**

Data Source: Alaska Bureau of Vital Statistics

	Alaska AN/AI					
	Male		Female		Total	
	n	Rate ††	n	Rate ††	n	Rate ††
1992-1995	194	98.5	57	30.6	251	64.6
1996-1999	180	86.6	47	23.2	227	54.6
2000-2003	163	71.9	62	27.2	225	49.6
2004-2007	181	79.9	66	28.8	247	54.4
2008-2011	191	77.5*	56	23.9	247	51.0*

	Alaska Non-Native					
	Male		Female		Total	
	n	Rate ††	n	Rate ††	n	Rate ††
1992-1995	419	39.9	92	9.9	511	25.8
1996-1999	363	36.9	104	11.0	467	24.0
2000-2003	338	32.3	96	9.1	434	20.9
2004-2007	391	34.5	95	8.5	486	21.8
2008-2011	399	32.2*	102	8.4	501	20.7*

†† Death rate per 100,000 age-adjusted to 2000 US standard population

* Significantly different from the 1992-1995 rate, p<0.05

Table B- 3. Intentional Injury Death by Type, Alaska Native People, All Ages, 2002-2011

Data Source: Alaska Bureau of Vital Statistics

	n	Total
Suicide	478	79.3%
Homicide	125	20.7%
Total	603	100.0%

Appendix B. Data Tables (continued)**Table B-4. Intentional Injury Death Rate^{††}, Gender and Age Group, Alaska Native People, 2002-2011**

Data Source: Alaska Bureau of Vital Statistics

Age	Female		Male		Total	
	n	Rate ††	n	Rate ††	n	Rate ††
0-9	§§	¶¶	§§	¶¶	7	¶¶
10-19	38	31.7	98	78.3	136	55.5
20-29	51	62.6	171	201.2	222	133.4
30-39	26	36.4	72	100.9	98	68.6
40-49	22	28.8	63	83.3	85	56.0
50-59	6	¶¶	27	47.3	33	28.6
60-69	6	¶¶	8	¶¶	14	23.1**
70+	§§	¶¶	6	¶¶	8	¶¶
Total	155	27.0	448	77.0	603	52.2

†† Death rate per 100,000 age-adjusted to 2000 US standard population

§§ Categories with fewer than five deaths are not reported

¶¶ Rate not calculated due to small number of deaths (<10)

** Rate is based on 10-19 deaths and should be interpreted with caution

Table B-5. Unintentional Injury Death Rate^{††} by Region, Alaska Native People, 2002-2011

Data Source: Alaska Bureau of Vital Statistics

	n	Rate ††
Bristol Bay *	73	158.4
Anchorage and Matanuska-Susitna *	336	136.5
Copper River/Prince William Sound	18	122.3**
Norton Sound	75	114.5
Northwest Arctic	62	112.7
Interior	127	106.9
Aleutians and Pribilofs	17	102.6**
Yukon-Kuskokwim	176	92.4
Kenai Peninsula *	31	75.9
Arctic Slope *	28	70.4
Southeast *	81	66.6
Kodiak	12	55.0**
All Alaska, Non-Native only	2,546	49.5
All Alaska, AN/AI only	1,036	105.1

†† Death rate per 100,000 age-adjusted to 2000 US standard population

* Regional rate is significantly different from the AN/AI statewide rate, $p < 0.05$

** Rate is based on 10-19 deaths and should be interpreted with caution

Appendix B. Data Tables (continued)**Table B-6. Unintentional Injury Death Rate^{††} by Gender, Race and Year, 1992-2011**

Data Source: Alaska Bureau of Vital Statistics

	Alaska AN/AI					
	Male		Female		Total	
	n	Rate ††	n	Rate ††	n	Rate ††
1992-1995	319	183.4	118	69.7	437	126.1
1996-1999	272	156.0	105	63.0	377	108.5
2000-2003	286	156.8	125	65.0	411	109.3
2004-2007	287	147.6	115	60.4	402	103.2
2008-2011	302	146.1*	144	72.7	446	109.5*

	Alaska Non-Native					
	Male		Female		Total	
	n	Rate ††	n	Rate ††	n	Rate ††
1992-1995	856	90.2	215	30.1	1,071	61.5
1996-1999	672	72.7	211	29.8	883	52.1
2000-2003	744	78.4	276	31.6	1,020	55.1
2004-2007	702	67.1	276	28.9	978	48.3
2008-2011	743	64.9*	303	30.9	1,046	48.6*

†† Death rate per 100,000 age-adjusted to 2000 US standard population

* Significantly different from the 1992-1995 rate, p<0.05

Table B-7. Unintentional Injury Death by Type, Alaska Native People, All Ages, 2002-2011

Data Source: Alaska Bureau of Vital Statistics

	n	Total
Poisoning	276	26.6%
Drowning	169	16.3%
Motor vehicle	158	15.2%
Other or unspecified	124	12.0%
Off-road vehicle	98	9.5%
Excessive cold	96	9.3%
Threats to breathing	49	4.7%
Fall	35	3.4%
Smoke, fire & flames	32	3.1%
Total	1,037	100.0%

Appendix B. Data Tables (continued)

Table B-8. Unintentional Injury Death Rate^{††}, Gender and Age Group, Alaska Native People, 2002-2011

Data Source: Alaska Bureau of Vital Statistics

Age	Female		Male		Total	
	n	Rate ^{††}	n	Rate ^{††}	n	Rate ^{††}
0-9	32	29.2	55	46.5	87	38.2
10-19	36	30.0	81	64.8	117	47.8
20-29	34	41.7	143	168.3	177	106.3
30-39	62	86.8	123	172.3	185	129.5
40-49	62	81.3	125	165.4	187	123.1
50-59	36	61.8	93	163.1	129	111.9
60-69	16	51.7**	49	165.1	65	107.2
70+	40	157.5	50	257.0	90	200.6
Total	318	55.5	719	123.6	1,037	89.8

†† Death rate per 100,000 age-adjusted to 2000 US standard population

** Rate is based on 10-19 deaths and should be interpreted with caution

Table B-9. Suicide Death Rate^{††} by Region, Alaska Native People, 2002-2011

Data Source: Alaska Bureau of Vital Statistics

	n	Rate ^{††}
Norton Sound *	64	81.6
Northwest Arctic *	48	71.6
Yukon-Kuskokwim	130	58.2
Arctic Slope	28	54.6
Interior	54	40.0
Kenai Peninsula	13	26.4**
Anchorage and Matanuska-Susitna *	86	26.1
Bristol Bay	12	25.3**
Southeast *	28	20.2
Aleutians and Pribilofs	§§	¶
Copper River/Prince William Sound	6	¶
Kodiak	5	¶
All Alaska, Non-Native only	953	16.9
All Alaska, AN/AI only	478	40.3

†† Death rate per 100,000 age-adjusted to 2000 US standard population

* Regional rate is significantly different from the AN/AI statewide rate, $p < 0.05$

** Rate is based on 10-19 deaths and should be interpreted with caution

¶ Rate not calculated due to small number of deaths (<10)

Appendix B. Data Tables (continued)

Table B-10. Suicide Death Rate^{††} by Gender, Race and Year, 1992-2011

Data Source: Alaska Bureau of Vital Statistics

	Alaska AN/AI					
	Male		Female		Total	
	n	Rate ††	n	Rate ††	n	Rate ††
1992-1995	147	73.4	37	19.3	184	46.4
1996-1999	132	59.2	29	13.2	161	36.2
2000-2003	129	56.3	35	14.6	164	35.5
2004-2007	151	66.0	50	21.5	201	43.7
2008-2011	152	60.4*	43	18.4	195	39.7*

	Alaska Non-Native					
	Male		Female		Total	
	n	Rate ††	n	Rate ††	n	Rate ††
1992-1995	309	30.7	59	6.5	368	19.2
1996-1999	260	28.2	68	7.2	328	17.6
2000-2003	262	25.8	67	6.3	329	16.1
2004-2007	292	26.6	67	6.0	359	16.4
2008-2011	334	27.2*	86	7.0	420	17.4*

†† Death rate per 100,000 age-adjusted to 2000 US standard population

* Significantly different from the 1992-1995 rate, p<0.05

Table B-11. Suicide Death by Type, Alaska Native People, All Ages, 2002-2011

Data Source: Alaska Bureau of Vital Statistics

	n	Total
Firearm	277	58.0%
Strangulation or suffocation	164	34.3%
Poisoning	25	5.2%
Other or unspecified	12	2.5%
Total	478	100.0%

Appendix B. Data Tables (continued)

Table B-12. Suicide Death Rate^{††}, Gender and Age Group, Alaska Native People, 2002-2011

Data Source: Alaska Bureau of Vital Statistics

Age	Female		Male		Total	
	n	Rate ††	n	Rate ††	n	Rate ††
0-9	§§	¶¶	§§	¶¶	§§	¶¶
10-19	31	25.9	77	61.6	108	44.1
20-29	38	46.6	157	184.7	195	117.1
30-39	21	29.4	50	70.1	71	49.7
40-49	13	17.0**	54	71.4	67	44.1
50-59	§§	¶¶	22	38.6	25	21.7
60-69	§§	¶¶	§§	¶¶	8	¶¶
70 +	§§	¶¶	§§	¶¶	4	¶¶
Total	111	19.4	367	63.1	478	41.4

†† Death rate per 100,000 age-adjusted to 2000 US standard population

§§ Categories with fewer than five deaths are not reported

¶¶ Rate not calculated due to small number of deaths (<10)

** Rate is based on 10-19 deaths and should be interpreted with caution

Table B-13. Poisoning Death Rate^{††} by Region, Alaska Native People, 2002-2011

Data Source: Alaska Bureau of Vital Statistics

	n	Rate ††
Anchorage and Matanuska-Susitna *	135	46.6
Bristol Bay	14	30.8**
Interior	32	26.0
Norton Sound	14	25.0**
Southeast	28	21.8
Northwest Arctic	10	20.2**
Yukon-Kuskokwim *	25	12.9
Aleutians and Pribilofs	§§	¶¶
Arctic Slope	§§	¶¶
Copper River/Prince William Sound	§§	¶¶
Kenai Peninsula	9	¶¶
Kodiak	§§	¶¶
All Alaska, non-Native only	683	11.5
All Alaska, AN/AI only	276	27.2

†† Death rate per 100,000 age-adjusted to 2000 US standard population

* Regional rate is significantly different from the AN/AI statewide rate, p<0.05

** Rate is based on 10-19 deaths and should be interpreted with caution

¶¶ Rate not calculated due to small number of deaths (<10)

§§ Categories with fewer than five deaths are not reported

Appendix B. Data Tables (continued)

Table B-14. Poisoning Death Rate^{††} by Gender, Race and Year, 1992-2011

Data Source: Alaska Bureau of Vital Statistics

	Alaska AN/AI					
	Male		Female		Total	
	n	Rate ††	n	Rate ††	n	Rate ††
1992-1995	15	9.5	12	7.8	27	8.6
1996-1999	28	16.0	31	16.6	59	16.3
2000-2003	35	18.8	36	17.9	71	18.3
2004-2007	37	17.2	35	18.6	72	18.1
2008-2011	93	43.3*	75	35.9*	168	39.6*

	Alaska Non-Native					
	Male		Female		Total	
	n	Rate ††	n	Rate ††	n	Rate ††
1992-1995	49	4.6	15	1.6	64	3.2
1996-1999	61	5.2	29	3.7	90	4.6
2000-2003	126	10.2	83	7.8	209	9.1
2004-2007	141	11.9	80	7.0	221	9.5
2008-2011	236	17.7*	107	9.2*	343	13.7*

†† Death rate per 100,000 age-adjusted to 2000 US standard population

* Significantly different from the 1992-1995 rate, p<0.05

Table B-15. Poisoning Death by Type, Alaska Native People, All Ages, 2002-2011

Data Source: Alaska Bureau of Vital Statistics

	n	Total
Drugs or medications	142	51.4%
Alcohol	114	41.3%
Other or unspecified Poisons	20	7.2%
Total	276	100.0%

Appendix B. Data Tables (continued)

Table B-16. Poisoning Death Rate^{††}, Gender and Age Group, Alaska Native People, 2002-2011

Data Source: Alaska Bureau of Vital Statistics

Age in Year:	Female		Male		Total	
	n	Rate ††	n	Rate ††	n	Rate ††
0-9	§§	¶	§§	¶	§§	¶
10-19	§§	¶	8	¶	12	4.9**
20-29	17	20.9**	31	36.5	48	28.8
30-39	39	54.6	33	46.2	72	50.4
40-49	37	48.5	42	55.6	79	52.0
50-59	19	32.6**	27	47.3	46	39.9
60-69	9	¶	§§	¶	13	21.4**
70 +	§§	¶	§§	¶	5	¶
Total	129	22.5	147	25.3	276	23.9

†† Death rate per 100,000 age-adjusted to 2000 US standard population

§§ Categories with fewer than five deaths are not reported

¶ Rate not calculated due to small number of deaths (<10)

** Rate is based on 10-19 deaths and should be interpreted with caution

Table B-17. Drowning Death Rate^{††} by Region, Alaska Native People, 2002-2011

Data Source: Alaska Bureau of Vital Statistics

	n	Rate ††
Bristol Bay *	19	41.1**
Yukon-Kuskokwim *	57	28.1
Northwest Arctic *	17	26.1**
Norton Sound	14	20.7**
Interior	18	14.2**
Southeast	17	12.5**
Aleutians and Pribilofs	§§	¶
Anchorage and Matanuska-Susitna	7	¶
Arctic Slope	8	¶
Copper River/Prince William Sound	§§	¶
Kenai Peninsula	§§	¶
Kodiak	§§	¶
All Alaska, non-Native only	222	3.9
All Alaska, AN/AI only	169	15.1

†† Death rate per 100,000 age-adjusted to 2000 US standard population

* Regional rate is significantly different from the AN/AI statewide rate, $p < 0.05$

** Rate is based on 10-19 deaths and should be interpreted with caution

§§ Categories with fewer than five deaths are not reported

¶ Rate not calculated due to small number of deaths (<10)

Appendix B. Data Tables (continued)**Table B-18. Drowning Death Rate^{††} by Gender, Race and Year, 1992-2011**

Data Source: Alaska Bureau of Vital Statistics

	Alaska AN/AI					
	Male		Female		Total	
	n	Rate ††	n	Rate ††	n	Rate ††
1992-1995	89	49.4	14	6.0	103	27.6
1996-1999	74	41.7	7	¶	81	21.8
2000-2003	61	30.3	14	5.7	75	17.9
2004-2007	69	32.3	13	5.0	82	18.6
2008-2011	52	22.2*	§§	¶	56	12.0*

	Alaska Non-Native					
	Male		Female		Total	
	n	Rate ††	n	Rate ††	n	Rate ††
1992-1995	144	13.1	21	2.3	165	7.9
1996-1999	98	9.2	15	1.7	113	5.6
2000-2003	90	9.2	7	¶	97	5.0
2004-2007	75	6.1	10	0.9	85	3.6
2008-2011	79	6.3*	12	1.2*	91	3.9*

†† Death rate per 100,000 age-adjusted to 2000 US standard population

¶ Rate not calculated due to small number of deaths (<10)

§§ Categories with fewer than five deaths are not reported

* Significantly different from the 1992-1995 rate, p<0.05

Table B-19. Drowning Death by Type, Alaska Native People, All Ages, 2002-2011

Data Source: Alaska Bureau of Vital Statistics

	n	Total
While in natural water	61	36.1%
Water transport, boating	46	27.2%
Other or unspecified	41	24.3%
Fall into natural water, not from boat	21	12.4%
Total	169	100.0%

Appendix B. Data Tables (continued)**Table B-20. Drowning Death Rate^{††}, Gender and Age Group, Alaska Native People, 2002-2011**

Data Source: Alaska Bureau of Vital Statistics

Age	Female		Male		Total	
	n	Rate ††	n	Rate ††	n	Rate ††
0-9	7	¶	12	10.1**	19	8.3**
10-19	7	¶	18	14.4**	25	10.2
20-29	§§	¶	36	42.4	37	22.2
30-39	§§	¶	28	39.2	31	21.7
40-49	§§	¶	27	35.7	30	19.8
50-59	§§	¶	13	22.8**	14	12.1**
60-69	§§	¶	7	¶	9	¶
70 +	§§	¶	§§	¶	§§	¶
Total	24	4.2	145	24.9	169	14.6

†† Death rate per 100,000 age-adjusted to 2000 US standard population

¶ Rate not calculated due to small number of deaths (<10)

** Rate is based on 10-19 deaths and should be interpreted with caution

§§ Categories with fewer than five deaths are not reported

Table B-21. Motor Vehicle Death Rate^{††} by Region, Alaska Native People, 2002-2011

Data Source: Alaska Bureau of Vital Statistics

	n	Rate ††
Kenai Peninsula *	13	28.9**
Anchorage and Matanuska-Susitna*	70	25.5
Interior	20	15.9
Norton Sound	11	13.6**
Southeast *	10	7.4**
Yukon-Kuskokwim *	11	4.9**
Aleutians and Pribilofs	§§	¶
Arctic Slope	5	¶
Bristol Bay	6	¶
Copper River/Prince William Sound	6	¶
Kodiak	§§	¶
Northwest Arctic	§§	¶
All Alaska, non-Native only	636	11.7
All Alaska, AN/AI only	158	14.7

†† Death rate per 100,000 age-adjusted to 2000 US standard population

* Regional rate is significantly different from the AN/AI statewide rate, $p < 0.05$

** Rate is based on 10-19 deaths and should be interpreted with caution

§§ Categories with fewer than five deaths are not reported

¶ Rate not calculated due to small number of deaths (<10)

Appendix B. Data Tables (continued)**Table B-22. Motor Vehicle Death Rate^{††} by Gender, Race and Year, 1992-2011**

Data Source: Alaska Bureau of Vital Statistics

	Alaska AN/AI					
	Male		Female		Total	
	n	Rate ††	n	Rate ††	n	Rate ††
1992-1995	49	26.7	37	20.3	86	23.7
1996-1999	51	26.5	20	10.3	71	18.2
2000-2003	56	30.2	21	11.3	77	20.2
2004-2007	45	20.7	18	7.7	63	14.2
2008-2011	34	16.4*	22	9.5*	56	12.9*

	Alaska Non-Native					
	Male		Female		Total	
	n	Rate ††	n	Rate ††	n	Rate ††
1992-1995	231	25.2	99	12.9	330	19.2
1996-1999	173	17.5	72	8.2	245	13.0
2000-2003	226	23.6	89	9.5	315	16.5
2004-2007	199	19.3	76	6.9	275	13.7
2008-2011	141	11.7*	61	5.6*	202	8.7

†† Death rate per 100,000 age-adjusted to 2000 US standard population

* Significantly different from the 1992-1995 rate, p<0.05

Table B-23. Motor Vehicle Death by Type, Alaska Native People, All Ages, 2002-2011

Data Source: Alaska Bureau of Vital Statistics

	n	Total
Motor vehicle passenger	91	57.6%
Pedestrian	58	36.7%
Motorcyclist or Bicyclist	9	5.7%
Total	158	100.0%

Appendix B. Data Tables (continued)**Table B-24. Motor Vehicle Death Rate^{††}, Gender and Age Group, Alaska Native People, 2002-2011**

Data Source: Alaska Bureau of Vital Statistics

Age	Female		Male		Total	
	n	Rate ††	n	Rate ††	n	Rate ††
0-9	§§	¶	11	9.3**	12	5.3**
10-19	14	11.7**	12	9.6**	26	10.6
20-29	9	¶	16	18.8**	25	15.0
30-39	9	¶	25	35.0	34	23.8
40-49	7	¶	14	18.5**	21	13.8
50-59	6	¶	17	29.8**	23	20.0
60-69	§§	¶	10	33.7**	12	19.8**
70 +	§§	¶	§§	¶	5	¶
Total	51	8.9	107	18.4	158	13.7

†† Death rate per 100,000 age-adjusted to 2000 US standard population

§§ Categories with fewer than five deaths are not reported

¶ Rate not calculated due to small number of deaths (<10)

** Rate is based on 10-19 deaths and should be interpreted with caution

Table B-25. Homicide Death Rate^{††} by Region, Alaska Native People, 2002-2011

Data Source: Alaska Bureau of Vital Statistics

	n	Rate ††
Anchorage and Matanuska-Susitna*	51	16.3
Norton Sound	11	15.7**
Yukon-Kuskokwim	26	13.9
Interior	13	10.4**
Southeast	12	8.8**
Aleutians and Pribilofs	§§	¶
Arctic Slope	§§	¶
Bristol Bay	§§	¶
Copper River/Prince William Sound	§§	¶
Kenai Peninsula	§§	¶
Kodiak	§§	¶
Northwest Arctic	§§	¶
All Alaska, non-Native only	268	4.5
All Alaska, AN/AI only	125	11.2

†† Death rate per 100,000 age-adjusted to 2000 US standard population

* Regional rate is significantly different from the AN/AI statewide rate, p<0.05

** Rate is based on 10-19 deaths and should be interpreted with caution

§§ Categories with fewer than five deaths are not reported

¶ Rate not calculated due to small number of deaths (<10)

Appendix B. Data Tables (continued)**Table B-26. Homicide Death Rate^{††} by Gender, Race and Year, 1992-2011**

Data Source: Alaska Bureau of Vital Statistics

	Alaska AN/AI					
	Male		Female		Total	
	n	Rate ††	n	Rate ††	n	Rate ††
1992-1995	47	25.1	20	11.3	67	18.2
1996-1999	48	27.4	18	10.0	66	18.3
2000-2003	34	15.6	27	12.7	61	14.1
2004-2007	30	14.0	16	7.4	46	10.7
2008-2011	39	17.1*	13	5.5*	52	11.3*

	Alaska Non-Native					
	Male		Female		Total	
	n	Rate ††	n	Rate ††	n	Rate ††
1992-1995	110	9.2	33	3.4	143	6.6
1996-1999	103	8.7	36	3.7	139	6.4
2000-2003	76	6.6	29	2.8	105	4.8
2004-2007	99	7.9	28	2.6	127	5.4
2008-2011	65	5.0*	16	1.4*	81	3.3*

†† Death rate per 100,000 age-adjusted to 2000 US standard population

* Significantly different from the 1992-1995 rate, p<0.05

Table B-27. Homicide Death by Type, Alaska Native People, All Ages, 2002-2011

Data Source: Alaska Bureau of Vital Statistics

	n	Total
Firearm	62	49.6%
Other or unspecified	39	31.2%
Sharp object	18	14.4%
Strangulation or suffocation	6	4.8%
Total	125	100.0%

Appendix B. Data Tables (continued)

Table B-28. Homicide Death Rate^{††}, Gender and Age Group, Alaska Native People, 2002-2011

Data Source: Alaska Bureau of Vital Statistics

Age	Female		Male		Total	
	n	Rate ††	n	Rate ††	n	Rate ††
0-9	§§	¶	§§	¶	7	¶
10-19	7	¶	21	16.8	28	11.4
20-29	13	16.0	14	16.5	27	16.2
30-39	§§	¶	22	30.8	27	18.9
40-49	9	¶	9	¶	18	11.9**
50-59	§§	¶	5	¶	8	¶
60-69	§§	¶	§§	¶	6	¶
70+	§§	¶	§§	¶	§§	¶
Total	44	7.7	81	13.9	125	10.8

†† Death rate per 100,000 age-adjusted to 2000 US standard population

§§ Categories with fewer than five deaths are not reported

¶ Rate not calculated due to small number of deaths (<10)

** Rate is based on 10-19 deaths and should be interpreted with caution

Table B-29. Intentional Hospitalization Rate[§] by Region, Alaska Native People, 2002-2011

Data Source: Alaska Trauma Registry

	n	Rate §
Norton Sound *	642	83.3
Northwest Arctic *	509	78.7
Interior	619	46.6
Yukon-Kuskokwim	1,004	45.8
Southeast *	536	38.1
Arctic Slope *	189	35.6
Anchorage and Matanuska-Susitna *	1,163	35.6
Bristol Bay *	176	34.5
Copper River/Prince William Sound *	38	24.9
Kodiak*	47	22.9
Kenai Peninsula *	94	19.0
Aleutians and Pribilofs *	24	12.8
All Alaska, non-Native only	4,171	7.1
All Alaska, ANAI only	5,066	43.2

§ Hospitalization rate per 10,000 age-adjusted to 2000 US standard population

* Regional rate is significantly different from the AN/AI statewide rate, p<0.05

Appendix B. Data Tables (continued)**Table B-30. Intentional Injury Hospitalization Rate[§] by Gender, Race and Year, 1992-2011**

Data Source: Alaska Trauma Registry

	Alaska AN/AI					
	Male		Female		Total	
	n	Rate §	n	Rate §	n	Rate §
1992-1995	804	41.4	593	30.8	1,397	36.2
1996-1999	937	45.3	821	38.5	1,758	41.9
2000-2003	983	44.9	932	40.4	1,915	42.5
2004-2007	1,093	47.9	1,122	47.9	2,215	47.9
2008-2011	1,012	42.4	916	37.9*	1,928	40.1*

	Alaska Non-Native					
	Male		Female		Total	
	n	Rate §	n	Rate §	n	Rate §
1992-1995	884	7.7	555	5.4	1,439	6.6
1996-1999	898	7.8	853	8.1	1,751	8.0
2000-2003	935	7.9	974	9.1	1,909	8.5
2004-2007	887	7.3	811	7.3	1,698	7.3
2008-2011	817	6.4*	731	6.5*	1,548	6.5

§ Hospitalization rate per 10,000 age-adjusted to 2000 US standard population

* Significantly different from the 1992-1995 rate, p<0.05

Table B-31. Intentional Injury Hospitalization by Type, Alaska Native People, All Ages, 2002-2011

Data Source: Alaska Trauma Registry

	n	Total
Suicide Attempt	3,022	59.6%
Assault	2,047	40.4%
TOTAL	5,069	100.0%

Appendix B. Data Tables (continued)**Table B-32. Intentional Injury Hospitalization Rate[§], Gender and Age Group, Alaska Native People, 2002-2011**

Data Source: Alaska Trauma Registry

Age	Female		Male		Total	
	n	Rate §	n	Rate §	n	Rate §
0-9	19	¶	30	2.5	49	2.1
10-19	691	57.6	453	36.2	1,144	46.7
20-29	787	96.6	918	108.0	1,705	102.4
30-39	420	58.8	497	69.6	917	64.2
40-49	375	49.2	449	59.4	824	54.3
50-59	143	24.6	188	33.0	331	28.7
60-69	37	12.0	28	9.4	65	10.7
70+	14	¶	19	¶	33	7.4
Total	2,486	43.4	2,582	44.4	5,068	43.9

§ Hospitalization rate per 10,000 age-adjusted to 2000 US standard population

¶ Rate not calculated due to small number of hospitalizations (<20)

Table B-33. Unintentional Hospitalization Rate[§] by Region, Alaska Native People, 2002-2011

Data Source: Alaska Trauma Registry

	n	Rate §
Bristol Bay *	627	134.4
Norton Sound *	858	131.0
Arctic Slope *	532	130.3
Northwest Arctic *	746	126.9
Copper River/Prince William Sound *	164	109.0
Southeast *	1,350	107.2
Interior	1,261	105.5
Yukon-Kuskokwim	1,913	102.9
Anchorage and Matanuska-Susitna *	2,726	102.4
Kenai Peninsula *	382	94.9
Kodiak *	163	81.1
Aleutians and Pribilofs *	109	62.1
All Alaska, non-Native only	24,583	51.6
All Alaska, ANAI only	10,943	109.2

§ Hospitalization rate per 10,000 age-adjusted to 2000 US standard population

* Regional rate is significantly different from the AN/AI statewide rate, p<0.05

Appendix B. Data Tables (continued)**Table B-34. Unintentional Injury Hospitalization Rate[§] by Gender, Race and Year, 1992-2011**

Data Source: Alaska Trauma Registry

	Alaska AN/AI					
	Male		Female		Total	
	n	Rate §	n	Rate §	n	Rate §
1992-1995	2,363	131.8	1,462	97.0	3,825	115.3
1996-1999	2,569	137.3	1,636	99.9	4,205	119.3
2000-2003	2,776	139.2	1,820	100.9	4,596	120.5
2004-2007	2,724	130.3	1,900	101.0	4,624	116.6
2008-2011	2,337	106.9*	1,752	90.4*	4,089	100.1*

	Alaska Non-Native					
	Male		Female		Total	
	n	Rate §	n	Rate §	n	Rate §
1992-1995	6,191	68.7	3,221	49.3	9,412	60.2
1996-1999	5,994	65.1	3,507	50.6	9,501	59.1
2000-2003	6,317	65.3	4,161	52.7	10,478	60.0
2004-2007	6,089	59.8	4,148	48.2	10,237	54.9
2008-2011	5,461	50.4*	3,989	43.0*	9,450	47.6*

§ Hospitalization rate per 10,000 age-adjusted to 2000 US standard population

* Significantly different from the 1992-1995 rate, p<0.05

Table B-35. Unintentional Injury Hospitalization by Type, Alaska Native People, All Ages, 2002-2011

Data Source: Alaska Trauma Registry

	n	Total
Falls	4,807	43.9%
Other Incidents	1,933	17.6%
Motor Vehicle	1,375	12.6%
ATV	776	7.1%
Snowmachine	749	6.8%
Other Vehicle	551	5.0%
Cut	391	3.6%
Poisoning	373	3.4%
Total	10,955	100.0%

Appendix B. Data Tables (continued)**Table B-36. Unintentional Injury Hospitalization Rate[§], Gender and Age Group, Alaska Native People, 2002-2011**

Data Source: Alaska Trauma Registry

Age	Female		Male		Total	
	n	Rate §	n	Rate §	n	Rate §
0-9	567	51.7	797	67.3	1,364	59.8
10-19	679	56.6	1,285	102.7	1,964	80.2
20-29	509	62.5	1,183	139.2	1,692	101.6
30-39	432	60.5	786	110.1	1,218	85.3
40-49	544	71.3	973	128.7	1,517	99.9
50-59	550	94.4	629	110.3	1,179	102.3
60-69	442	142.9	352	118.6	794	131.0
70+	813	320.1	410	210.7	1,223	272.6
Total	4,536	79.1	6,415	110.3	10,951	94.8

§ Hospitalization rate per 10,000 age-adjusted to 2000 US standard population

Table B-37. Falls Hospitalization Rate[§] by Region, Alaska Native People, 2002-2011

Data Source: Alaska Trauma Registry

	n	Rate §
Arctic Slope *	234	72.1
Southeast *	769	65.6
Norton Sound *	348	64.3
Northwest Arctic	278	57.4
Bristol Bay	223	57.1
Kenai Peninsula	166	51.5
Interior *	534	51.4
Copper River/Prince William Sound	68	49.6
Yukon-Kuskokwim *	679	45.9
Kodiak *	68	38.4
Aleutians and Pribilofs *	61	37.0
Anchorage and Matanuska-Susitna *	1,328	36.3
All Alaska, non-Native only	12,128	29.1
All Alaska, ANAI only	4,799	56.8

§ Hospitalization rate per 10,000 age-adjusted to 2000 US standard population

* Regional rate is significantly different from the AN/AI statewide rate, $p < 0.05$

Appendix B. Data Tables (continued)**Table B-38. Falls Hospitalization Rate[§] by Gender, Race and Year, 1992-2011**

Data Source: Alaska Trauma Registry

	Alaska AN/AI					
	Male		Female		Total	
	n	Rate §	n	Rate §	n	Rate §
1992-1995	714	48.1	733	59.4	1,447	54.7
1996-1999	773	51.8	831	60.5	1,604	57.0
2000-2003	940	56.3	927	60.4	1,867	59.0
2004-2007	950	53.3	1,007	62.9	1,957	59.2
2008-2011	877	46.0	1,070	62.0	1,947	55.3

	Alaska Non-Native					
	Male		Female		Total	
	n	Rate §	n	Rate §	n	Rate §
1992-1995	2,005	29.0	1,600	30.1	3,605	30.1
1996-1999	2,039	27.3	1,940	33.1	3,979	31.0
2000-2003	2,264	27.8	2,427	34.4	4,691	31.7
2004-2007	2,403	27.5	2,541	32.5	4,944	30.6
2008-2011	2,341	24.7*	2,635	30.3	4,976	28.1

§ Hospitalization rate per 10,000 age-adjusted to 2000 US standard population

* Significantly different from the 1992-1995 rate, p<0.05

Table B-39. Falls Hospitalization by Type, Alaska Native People, All Ages, 2002-2011

Data Source: Alaska Trauma Registry

	n	Total
Same level, slipping or stumbling	2,129	44.3%
Other or unspecified	948	19.7%
From one level to another	780	16.2%
Stairs or steps	532	11.1%
Out of building or other structure	207	4.3%
Same level, collision or shoving by person	110	2.3%
Ladders or scaffolding	103	2.1%
Total	4,809	100.0%

Appendix B. Data Tables (continued)**Table B-40. Falls Hospitalization Rate[§], Gender and Age Group, Alaska Native People, 2002-2011**

Data Source: Alaska Trauma Registry

Age	Female		Male		Total	
	n	Rate §	n	Rate §	n	Rate §
0-9	246	22.4	295	24.9	541	23.7
10-19	137	11.4	280	22.4	417	17.0
20-29	173	21.2	274	32.2	447	26.9
30-39	189	26.5	241	33.8	430	30.1
40-49	297	38.9	397	52.5	694	45.7
50-59	385	66.1	312	54.7	697	60.5
60-69	373	120.6	195	65.7	568	93.7
70+	716	281.9	296	152.1	1,012	225.6
Total	2,516	43.9	2,290	39.4	4,806	41.6

§ Hospitalization rate per 10,000 age-adjusted to 2000 US standard population

Table B-41. Suicide Attempt or Self Harm Hospitalization Rate[§] by Region, Alaska Native People, 2002-2010

Data Source: Alaska Trauma Registry

	n	Rate §
Norton Sound *	514	64.5
Northwest Arctic *	301	45.2
Yukon-Kuskokwim *	647	27.1
Interior	355	26.2
Southeast	335	23.5
Arctic Slope *	109	19.8
Kodiak *	35	16.5
Bristol Bay *	88	16.4
Anchorage and Matanuska-Susitna *	539	16.0
Kenai Peninsula *	63	12.8
Copper River/Prince William Sound	19	¶
Aleutians and Pribilofs	7	¶
All Alaska, non-Native only	2,890	4.9
All Alaska, ANAI only	3,021	24.9

§ Hospitalization rate per 10,000 age-adjusted to 2000 US standard population

* Regional rate is significantly different from the AN/AI statewide rate, $p < 0.05$

¶ Rate not calculated due to small number of hospitalizations (<20)

Appendix B. Data Tables (continued)**Table B-42. Suicide Attempt or Self Harm Hospitalization Rate[§] by Gender, Race and Year, 1992-2010**

Data Source: Alaska Trauma Registry

	Alaska AN/AI					
	Male		Female		Total	
	n	Rate §	n	Rate §	n	Rate §
1992-1995	253	12.4	376	18.3	629	15.3
1996-1999	366	16.4	597	26.9	963	21.6
2000-2003	396	17.5	742	31.6	1,138	24.5
2004-2007	495	21.0	870	36.1	1,365	28.5
2008-2010	342	18.4*	639	35.0*	981	26.6*

	Alaska Non-Native					
	Male		Female		Total	
	n	Rate §	n	Rate §	n	Rate §
1992-1995	323	2.8	461	4.5	784	3.6
1996-1999	450	3.9	752	7.1	1,202	5.4
2000-2003	468	4.0	877	8.1	1,345	6.0
2004-2007	458	3.8	722	6.5	1,180	5.1
2008-2010	374	4.0*	586	6.9*	960	5.4*

§ Hospitalization rate per 10,000 age-adjusted to 2000 US standard population

* Significantly different from the 1992-1995 rate, p<0.05

Table B-43. Suicide Attempt or Self Harm Hospitalization by Type, Alaska Native People, All Ages, 2002-2010

Data Source: Alaska Trauma Registry

	n	Total
Poisoning	2,204	76.0%
Cutting or piercing instrument	371	12.8%
Firearms, air guns or explosives	131	4.5%
Hanging, strangulation or suffocation	126	4.3%
Other or unspecified	69	2.4%
Total	2,901	100.0%

Appendix B. Data Tables (continued)**Table B-44. Suicide Attempt or Self Harm Hospitalization Rate[§], Gender and Age Group, Alaska Native People, 2002-2010**

Data Source: Alaska Trauma Registry

Age	Female		Male		Total	
	n	Rate §	n	Rate §	n	Rate §
0-9	§§	¶	6	¶	8	¶
10-19	610	55.5	256	22.4	866	38.7
20-29	581	81.9	383	51.8	964	66.5
30-39	297	46.0	175	27.2	472	36.6
40-49	254	36.6	140	20.4	394	28.6
50-59	95	18.7	52	10.5	147	14.6
60-69	27	10.1	8	¶	35	6.7
70 +	6	¶	8	¶	14	¶
Total	1,872	34.4	1,028	19.1	2,900	26.2

§ Hospitalization rate per 10,000 age-adjusted to 2000 US standard population

¶ Rate not calculated due to small number of hospitalizations (<20)

Table B-45. Assault Hospitalization Rate[§] by Region, Alaska Native People, 2002-2011

Data Source: Alaska Trauma Registry

	n	Rate §
Northwest Arctic *	208	33.6
Interior	264	20.4
Anchorage and Matanuska-Susitna *	624	19.6
Norton Sound	128	18.7
Yukon-Kuskokwim	357	18.7
Bristol Bay	88	18.1
Arctic Slope	80	15.9
Southeast *	201	14.6
Kenai Peninsula *	31	6.2
Copper River/Prince William Sound	19	¶
Aleutians and Pribilofs	17	¶
Kodiak	12	¶
All Alaska, non-Native only	1,281	2.2
All Alaska, ANAI only	2,045	18.4

§ Hospitalization rate per 10,000 age-adjusted to 2000 US standard population

* Regional rate is significantly different from the AN/AI statewide rate, p<0.05

¶ Rate not calculated due to small number of hospitalizations (<20)

Appendix B. Data Tables (continued)**Table B-46. Assault Hospitalization Rate[§] by Gender, Race and Year, 1992-2011**

Data Source: Alaska Trauma Registry

	Alaska AN/AI					
	Male		Female		Total	
	n	Rate §	n	Rate §	n	Rate §
1992-1995	551	29.1	217	12.5	768	20.9
1996-1999	571	28.8	224	11.6	795	20.2
2000-2003	587	27.5	190	8.8	777	18.1
2004-2007	598	27.0	252	11.7	850	19.4
2008-2011	614	26.6*	212	9.3*	826	18.0*

	Alaska Non-Native					
	Male		Female		Total	
	n	Rate §	n	Rate §	n	Rate §
1992-1995	561	4.8	94	0.9	655	3.0
1996-1999	448	3.9	101	1.0	549	2.6
2000-2003	467	4.0	97	0.9	564	2.5
2004-2007	429	3.5	89	0.8	518	2.2
2008-2011	396	3.1*	87	0.8	483	2.0*

§ Hospitalization rate per 10,000 age-adjusted to 2000 US standard population

* Significantly different from the 1992-1995 rate, p<0.05

Table B-47. Assault Hospitalization by Type, Alaska Native People, All Ages, 2002-2011

Data Source: Alaska Trauma Registry

	n	Total
Fight or brawl	1,121	54.8%
Other or unspecified	269	13.1%
Cutting or piercing instrument	236	11.5%
Struck by blunt or thrown object	182	8.9%
Child or adult abuse	92	4.5%
Human bite	74	3.6%
Firearms or explosives	73	3.6%
Total	2,047	100.0%

Appendix B. Data Tables (continued)**Table B-48. Assault Hospitalization Rate[§], Gender and Age Group, Alaska Native People, 2002-2011**

Data Source: Alaska Trauma Registry

Age	Female		Male		Total	
	n	Rate §	n	Rate §	n	Rate §
0-9	17	¶	24	2.0	41	1.8
10-19	53	4.4	177	14.2	230	9.4
20-29	190	23.3	519	61.1	709	42.6
30-39	115	16.1	307	43.0	422	29.5
40-49	115	15.1	305	40.3	420	27.7
50-59	41	7.0	135	23.7	176	15.3
60-69	10	¶	20	6.7	30	4.9
70+	8	¶	11	¶	19	¶
Total	549	9.6	1,498	25.8	2,047	17.7

§ Hospitalization rate per 10,000 age-adjusted to 2000 US standard population

¶ Rate not calculated due to small number of hospitalizations (<20)

Table B-49. Motor Vehicle Hospitalization Rate[§] by Region, Alaska Native People, 2002-2011

Data Source: Alaska Trauma Registry

	n	Rate §
Copper River/Prince William Sound *	38	24.4
Anchorage and Matanuska-Susitna *	615	19.7
Kenai Peninsula *	92	18.8
Interior	180	13.3
Southeast	169	12.4
Kodiak	23	9.1
Bristol Bay *	46	8.9
Norton Sound *	56	7.8
Arctic Slope *	42	6.8
Northwest Arctic *	27	4.2
Yukon-Kuskokwim *	65	2.8
Aleutians and Pribilofs	7	¶
All Alaska, non-Native only	4,270	7.8
All Alaska, ANAI only	1,376	12.1

§ Hospitalization rate per 10,000 age-adjusted to 2000 US standard population

* Regional rate is significantly different from the AN/AI statewide rate, p<0.05

¶ Rate not calculated due to small number of hospitalizations (<20)

Appendix B. Data Tables (continued)**Table B-50. Motor Vehicle Hospitalization Rate[§] by Gender, Race and Year, 1992-2011**

Data Source: Alaska Trauma Registry

	Alaska AN/AI					
	Male		Female		Total	
	n	Rate §	n	Rate §	n	Rate §
1992-1995	312	16.7	232	12.9	544	14.8
1996-1999	370	18.1	254	13.2	624	15.7
2000-2003	385	18.0	282	13.6	667	15.8
2004-2007	305	13.6	252	11.4	557	12.5
2008-2011	274	11.0*	210	9.1*	484	10.1*

	Alaska Non-Native					
	Male		Female		Total	
	n	Rate §	n	Rate §	n	Rate §
1992-1995	1,298	12.7	765	9.1	2,063	11.0
1996-1999	1,206	11.7	761	8.3	1,967	10.1
2000-2003	1,338	12.9	805	8.5	2,143	10.8
2004-2007	1,093	9.8	691	6.7	1,784	8.3
2008-2011	944	7.9*	524	4.8*	1,468	6.4

§ Hospitalization rate per 10,000 age-adjusted to 2000 US standard population

* Significantly different from the 1992-1995 rate, p<0.05

Table B-51. Motor Vehicle Hospitalization by Type, Alaska Native People, All Ages, 2002-2011

Data Source: Alaska Trauma Registry

	n	Total
Collision with other vehicle	382	27.7%
Collision with pedestrian or bicyclist	363	26.3%
Crash without collision	340	24.7%
Motorcycle	135	9.8%
Other or unspecified	99	7.2%
While boarding or alighting	59	4.3%
Total	1,378	100.0%

Appendix B. Data Tables (continued)**Table B-52. Motor Vehicle Hospitalization Rate[§], Gender and Age Group, Alaska Native People, 2002-2011**

Data Source: Alaska Trauma Registry

Age	Female		Male		Total	
	n	Rate §	n	Rate §	n	Rate §
0-9	32	2.9	63	5.3	95	4.2
10-19	126	10.5	186	14.9	312	12.7
20-29	153	18.8	191	22.5	344	20.7
30-39	90	12.6	103	14.4	193	13.5
40-49	86	11.3	105	13.9	191	12.6
50-59	63	10.8	73	12.8	136	11.8
60-69	18	¶	33	11.1	51	8.4
70 +	33	13.0	19	¶	52	11.6
Total	603	10.5	773	13.3	1,376	11.9

§ Hospitalization rate per 10,000 age-adjusted to 2000 US standard population

¶ Rate not calculated due to small number of hospitalizations (<20).

Table B-53. All-Terrain Vehicle Hospitalization Rate[§] by Region, Alaska Native People, 2002-2011

Data Source: Alaska Trauma Registry

	n	Rate §
Bristol Bay *	98	19.1
Northwest Arctic *	102	15.0
Norton Sound *	111	14.6
Arctic Slope *	72	13.6
Yukon-Kuskokwim *	193	8.9
Interior	72	5.2
Southeast *	28	1.9
Anchorage and Matanuska-Susitna *	41	1.2
Kenai Peninsula	17	¶
Kodiak	16	¶
Aleutians and Pribilofs	13	¶
Copper River/Prince William Sound	7	¶
All Alaska, non-Native only	836	1.4
All Alaska, ANAI only	774	6.5

§ Hospitalization rate per 10,000 age-adjusted to 2000 US standard population

* Regional rate is significantly different from the AN/AI statewide rate, $p < 0.05$

¶ Rate not calculated due to small number of hospitalizations (<20)

Appendix B. Data Tables (continued)**Table B-54. All-Terrain Vehicle Hospitalization Rate[§] by Gender, Race and Year, 1992-2011**

Data Source: Alaska Trauma Registry

	Alaska AN/AI					
	Male		Female		Total	
	n	Rate §	n	Rate §	n	Rate §
1992-1995	142	7.3	63	3.3	205	5.2
1996-1999	180	8.5	74	3.2	254	5.7
2000-2003	180	7.3	123	5.1	303	6.2
2004-2007	201	9.3	130	5.5	331	7.3
2008-2011	183	7.5	105	4.3*	288	5.9*

	Alaska Non-Native					
	Male		Female		Total	
	n	Rate §	n	Rate §	n	Rate §
1992-1995	139	1.3	48	0.5	187	0.9
1996-1999	171	1.5	33	0.3	204	1.0
2000-2003	189	1.7	66	0.6	255	1.2
2004-2007	255	2.1	105	0.9	360	1.6
2008-2011	241	2.0*	96	0.9*	337	1.4*

§ Hospitalization rate per 10,000 age-adjusted to 2000 US standard population

* Significantly different from the 1992-1995 rate, p<0.05

Table B-55. All-Terrain Vehicle Hospitalization by Type, Alaska Native People, All Ages, 2002-2011

Data Source: Alaska Trauma Registry

	n	Total
ATV Driver	473	61.1%
ATV Passenger	193	24.9%
Other or unspecified	58	7.5%
Pedestrian	50	6.5%
Total	774	100.0%

Appendix B. Data Tables (continued)**Table B-56. All-Terrain Vehicle Hospitalization Rate[§], Gender and Age Group, Alaska Native People, 2002-2011**

Data Source: Alaska Trauma Registry

Age	Female		Male		Total	
	n	Rate §	n	Rate §	n	Rate §
0-9	29	2.6	46	3.9	75	3.3
10-19	123	10.4	144	11.5	269	11.0
20-29	48	5.9	121	14.2	169	10.2
30-39	27	3.8	72	10.1	99	6.9
40-49	28	3.7	49	6.5	77	5.1
50-59	16	¶	17	¶	33	2.9
60-69	6	¶	10	¶	16	¶
70 +	20	7.9	18	¶	38	8.5
Total	297	5.2	477	8.2	776	6.7

§ Hospitalization rate per 10,000 age-adjusted to 2000 US standard population

¶ Rate not calculated due to small number of hospitalizations (<20)

Table B-57. Snowmachine Hospitalization Rate[§] by Region, Alaska Native People, 2002-2011

Data Source: Alaska Trauma Registry

	n	Rate §
Northwest Arctic *	136	21.0
Yukon-Kuskokwim *	259	13.4
Arctic Slope *	63	12.2
Bristol Bay *	53	10.9
Norton Sound *	76	10.4
Interior	98	7.3
Anchorage and Matanuska-Susitna *	36	1.0
Copper River/Prince William Sound *	9	¶
Kenai Peninsula	9	¶
Aleutians and Pribilofs	§§	¶
Kodiak	§§	¶
Southeast	§§	¶
All Alaska, non-Native only	580	1.0
All Alaska, ANAI only	749	6.5

§ Hospitalization rate per 10,000 age-adjusted to 2000 US standard population

* Regional rate is significantly different from the AN/AI statewide rate, p<0.05

§§ Categories with fewer than five hospitalizations are not reported

¶ Rate not calculated due to small number of hospitalizations (<20)

Appendix B. Data Tables (continued)**Table B-58. Snowmachine Hospitalization Rate[§] by Gender, Race and Year, 1992-2011**

Data Source: Alaska Trauma Registry

	Alaska AN/AI					
	Male		Female		Total	
	n	Rate §	n	Rate §	n	Rate §
1992-1995	214	11.1	72	3.8	286	7.5
1996-1999	257	12.6	76	3.9	333	8.3
2000-2003	267	12.4	83	3.8	350	8.0
2004-2007	232	10.2	82	3.5	314	6.8
2008-2011	204	9.0*	58	2.4*	262	5.6*

	Alaska Non-Native					
	Male		Female		Total	
	n	Rate §	n	Rate §	n	Rate §
1992-1995	177	1.5	36	0.3	213	1.0
1996-1999	222	1.9	54	0.5	276	1.3
2000-2003	241	2.1	57	0.5	298	1.3
2004-2007	195	1.6	44	0.4	239	1.0
2008-2011	156	1.2*	46	0.4	202	0.8*

§ Hospitalization rate per 10,000 age-adjusted to 2000 US standard population

* Significantly different from the 1992-1995 rate, p<0.05

Table B-59. Snowmachine Hospitalization by Type, Alaska Native People, All Ages, 2002-2011

Data Source: Alaska Trauma Registry

	n	Total
Snowmachine Driver	541	72.2%
Snowmachine Passenger	115	15.4%
Other or unspecified	52	6.9%
Pedestrian	41	5.5%
Total	749	100.0%

Appendix B. Data Tables (continued)**Table B-60. Snowmachine Hospitalization Rate[§], Gender and Age Group, Alaska Native People, 2002-2011**

Data Source: Alaska Trauma Registry

Age	Female		Male		Total	
	n	Rate §	n	Rate §	n	Rate §
0-9	10	¶	16	¶	26	1.1
10-19	55	4.6	148	11.8	203	8.3
20-29	41	5.0	178	20.9	219	13.2
30-39	25	3.5	85	11.9	110	7.7
40-49	20	2.6	71	9.4	91	6.0
50-59	10	¶	35	6.1	45	3.9
60-69	14	¶	17	¶	31	5.1
70+	5	¶	19	¶	24	5.4
Total	180	3.1	569	9.8	749	6.5

§ Hospitalization rate per 10,000 age-adjusted to 2000 US standard population

¶ Rate not calculated due to small number of hospitalizations (<20)

Table B-61. Alaska Unintentional Poisoning Death Rate^{††} by Race, Alcohol and Drugs Combined, 2002-2011

Data Source: Alaska Bureau of Vital Statistics

	n	Rate ^{††}
AN/AI	256	25.3
Non-Native	649	10.9
Rate Ratio		2.3

†† Death rate per 100,000 age-adjusted to 2000 US standard population

Table B-62. Alaska Native Unintentional Poisoning Death Rate^{††}, Type and Year, 1996-2011

Data Source: Alaska Bureau of Vital Statistics

	Drugs		Alcohol	
	n	Rate ^{††}	n	Rate ^{††}
1996-1999	20	6.1	16	4.2**
2000-2003	41	10.5	17	4.8
2004-2007	42	11.0	23	5.6
2008-2011	72	16.4	87	21.1
Rate Ratio		2.7		5.0

†† Death rate per 100,000 age-adjusted to 2000 US standard population

** Rate is based on 10-19 deaths and should be interpreted with caution

Appendix B. Data Tables (continued)**Table B-63. Self-Inflicted Drug Poisoning Hospitalization Rate[§] by Race and Year, 1992-2010**

Data Source: Alaska Bureau of Vital Statistics

	ANAI		non-ANAI	
	n	Rate §	n	Rate §
1992-1995	408	10.0	624	2.8
1996-1999	696	15.8	995	4.5
2000-2003	832	18.0	1,118	4.9
2004-2007	1,008	21.1	985	3.1
2008-2010	713	19.5	769	4.3
Rate Ratio		2.0		1.5

§ Hospitalization rate per 10,000 age-adjusted to 2000 US standard population

Table B-64. Alaska Native Self-Inflicted Drug Poisoning Hospitalization Rate[§] by Gender, 2002-2010

Data Source: Alaska Bureau of Vital Statistics

	n	Rate §
Female	1,522	28.1
Male	598	11.4
Rate Ratio		2.5

§ Hospitalization rate per 10,000 age-adjusted to 2000 US standard population

Table B-65. Self-Inflicted Drug Poisoning Hospitalization Rate[§] by Race and Year, 1992-2010

Data Source: Alaska Bureau of Vital Statistics

	ANAI		non-ANAI	
	n	Rate §	n	Rate §
1992-1995	228	5.7	1,899	53.9
1996-1999	550	12.9	2,273	59.7
2000-2003	901	20.1	2,755	68.1
2004-2007	1,106	23.8	2,888	67.4
2008-2010	931	19.4	2,563	57.4
Rate Ratio		3.4		1.1

§ Hospitalization rate per 10,000 age-adjusted to 2000 US standard population

Appendix C. Injury Mechanisms with Corresponding ICD-9 and ICD-10 Codes

This table identifies the ICD-9 and -10 codes assigned to each injury mechanism as described in this report. In a few areas as noted the categorization differed between injury deaths and hospitalizations, based on injury frequency differences between the two data sets. ICD code assignments were applied to both data sets unless otherwise notated.

<u>Data set involved</u>	<u>Mechanism</u>	<u>ICD-9 codes assigned</u>	<u>ICD-10 codes assigned</u>
(Hospitalizations)	ATV	E821.0-821.9	
(Hospitalizations)	Cut, Pierce	E920	
(Deaths)	Drowning	E830.0 - E830.9, E832.0 - E833.9, E910.0 - E910.9	V90.0 - V90.9, V92.0 - V92.9, W65.0 - W74.9
(Deaths)	Excessive Cold	E901.0 - E901.9	X31.0 - X31.9
	Fall	E880.0 - E881.9, E882, E883.0 - E886.9, E888.0 - E888.9	W00.0 - W19.9
	Homicide, Assault	E960.0 - E960.9, E 961, E962.0 - E962.9, E 963, E964, E965.0 - E965.9, E966, E967.0 - E968.9, E969	X85.0 - X99.9, Y00.0 - Y09.9, Y87.1
	Motor Vehicle	E810.0 - E825.9, E929.0	V02.0 - V04.9, V09.0 - V09.9, V12.0 - 14.9, V19.0 - V85.9, V87.0 - V89.9, Y85.0 - Y85.9
(Hospitalizations)	Natural and Environmental Factors	E900-909, 928.0-928.2	
(Deaths)	Off-Road Vehicle	E820.0-821.9	V86.0 - V86.9
	Other and Unspecified	All codes not listed in other categories	All codes not listed in other categories
(Hospitalizations)	Other Vehicles	E800-807, E826, E833-838, E840-845	
	Poisoning	E850.0 - E850.9, E851, E852.0 - E855.9, E856, E857, E858.0 - 866.9, E867, E868.0 - E869.9, E929.2	X40.0 - X49.9
	Smoke, Fire, Flames	E890.0 - E891.9, E892, E893.0 - E893.9, E894, E895, E896, E897, E898.0 - E898.9, E899, E929.4	X00.0 - X09.9
(Hospitalizations)	Snowmachine	E820.0-820.9	
(Hospitalizations)	Struck by Person/Object	E916-917	
(Hospitalizations)	Submersion and Suffocation	E830.0 - E830.9, E832.0 - E832.9, E910.0 - E910.9, E911, E912, E913.0 - E913.9	
	Suicide, Self Harm	E950.0 - E953.9, E954, E955.0 - E955.9, E956, E957.0 - E958.9, E959	X60.0 - X84.9, Y87.0
(Deaths)	Threats to Breathing	E911, E912, E913.0 - E913.9	W75.0 - W84.9
	Undetermined Intent	E980.0 - E983.9, E984, E985.0 - E985.9, E986, E987.0 - E988.9, E989	Y10.0 - X34.9, Y87.2

Appendix D. Access to Care Coding for Alaskan Communities

Community remoteness was defined using the following categories, based on data from the Alaska Rural Primary Care Facility Needs Assessment Project Final Report prepared for the Denali Commission, October, 2000. The codes classify communities by travel distance and type needed to reach a hospital.

Codes:

- 0** = In community with highest level of hospital care in Alaska (Anchorage)
- 1** = In community with a hospital with more limited service
- 2** = On the road system within 100 miles of a hospital
- 3** = Within 100 air/water miles of a hospital, or more than 100 miles by road
- 4** = More than 100 air/water miles from a hospital

<u>Code</u>	<u>Community</u>	<u>Region</u>
4	Adak	Aleutians and Pribilofs
4	Akhiok	Kodiak
4	Akiachak	Yukon-Kuskokwim
4	Akiak	Yukon-Kuskokwim
4	Akutan	Aleutians and Pribilofs
4	Alakanuk	Yukon-Kuskokwim
4	Alatna	Interior
3	Alcan	Interior
2	Aleknagik	Bristol Bay
4	Alexander Creek	not census designated
4	Allakaket	Interior
4	Ambler	Northwest Arctic
4	Anaktuvuk Pass	Arctic Slope
2	Anchor Point	Kenai Peninsula
0	Anchorage	Anchorage/Mat-Su
4	Anderson	Interior
3	Andreafsky	Yukon-Kuskokwim
4	Angoon	Southeast
3	Aniak	Yukon-Kuskokwim
4	Anvik	Interior
4	Arctic Village	Interior
4	Atka	Aleutians and Pribilofs

<u>Code</u>	<u>Community</u>	<u>Region</u>
4	Atmautluak	Yukon-Kuskokwim
4	Atqasuk	Arctic Slope
1	Barrow	Arctic Slope
4	Beaver	Interior
1	Bethel	Yukon-Kuskokwim
4	Bettles	Interior
3	Big Delta	Interior
2	Big Lake	Anchorage/Mat-Su
4	Birch Creek	Interior
4	Brevig Mission	Norton Sound
4	Buckland	Northwest Arctic
4	Deering	Northwest Arctic
3	Delta Junction	Interior
1	Bristol Bay	Bristol Bay
3	Dot Lake	Interior
3	Dry Creek	Interior
4	Eagle	Interior
1	Eagle River/Chugiak	Anchorage/Mat-Su
4	Edna Bay	Southeast
4	Eek	Yukon-Kuskokwim
4	Egegik	Bristol Bay
2	Eklutna	Anchorage/Mat-Su

Appendix D. Access to Care Coding for Alaskan Communities (continued)

<u>Code</u>	<u>Community</u>	<u>Region</u>
4	Ekwok	Bristol Bay
4	Elfin Cove	Southeast
4	Elim	Norton Sound
0	Elmendorf AFB	Anchorage/Mat-Su
4	Emmonak	Yukon-Kuskokwim
2	Ester	Interior
4	Evansville	Interior
2	Eyak	Copper River/PWS
1	Fairbanks	Interior
4	False Pass	Aleutians and Pribilofs
3	Ferry	Interior
4	Fort Yukon	Interior
2	Fox	Interior
2	Fox River	Kenai Peninsula
2	Fritz Creek	Kenai Peninsula
3	Gakona	Copper River/PWS
4	Galena	Interior
4	Gambell	Norton Sound
4	Game Creek	Southeast
1	Girdwood	Anchorage/Mat-Su
3	Glennallen	Copper River/PWS
4	Golovin	Norton Sound
4	Goodnews Bay	Yukon-Kuskokwim
4	Grayling	Interior
3	Gulkana	Copper River/PWS
3	Gustavus	Southeast
3	Haines	Southeast
4	Halibut Cove	Kenai Peninsula
2	Happy Valley	Kenai Peninsula
3	Harding Lake	Interior

<u>Code</u>	<u>Community</u>	<u>Region</u>
3	Healy	Interior
4	Healy Lake	Interior
4	Hobart Bay	Southeast
3	Hollis	Southeast
4	Holy Cross	Interior
2	Butte	Anchorage/Mat-Su
3	Cantwell	Interior
3	Central	Interior
4	Chalkyitsik	Interior
4	Chase	Anchorage/Mat-Su
4	Chefornak	Yukon-Kuskokwim
4	Chenega Bay	Copper River/PWS
4	Chevak	Yukon-Kuskokwim
2	Chickaloon	Anchorage/Mat-Su
4	Chignik	Bristol Bay
4	Chignik Lagoon	Bristol Bay
4	Chignik Lake	Bristol Bay
3	Chiniak	Kodiak
3	Chistochina	Copper River/PWS
3	Chitina	Copper River/PWS
4	Chuathbaluk	Yukon-Kuskokwim
3	Circle	Interior
3	Circle Hot Springs	Interior
2	Clam Gulch	Kenai Peninsula
4	Clark's Point	Bristol Bay
3	Coffman Cove	Southeast
2	Cohoe	Kenai Peninsula
4	Cold Bay	Aleutians and Pribilofs
2	College	Interior
2	Cooper Landing	Kenai Peninsula

Appendix D. Access to Care Coding for Alaskan Communities (continued)

<u>Code</u>	<u>Community</u>	<u>Region</u>
3	Copper Center	Copper River/PWS
3	Copperville	Copper River/PWS
1	Cordova	Copper River/PWS
4	Covenant Life	Southeast
3	Craig	Southeast
4	Crooked Creek	Yukon-Kuskokwim
2	Crown Point	Kenai Peninsula
4	Cube Cove	Southeast
1	Homer	Kenai Peninsula
3	Hoonah	Southeast
4	Hooper Bay	Yukon-Kuskokwim
2	Hope	Kenai Peninsula
2	Houston	Anchorage/Mat-Su
4	Hughes	Interior
4	Huslia	Interior
3	Hydaburg	Southeast
4	Hyder	Southeast
4	Igiugig	Bristol Bay
4	Iliamna	Bristol Bay
4	Ivanof Bay	Bristol Bay
4	Jakolof Bay	Kenai Peninsula
1	Juneau	Southeast
2	Kachemak	Kenai Peninsula
4	Kake	Southeast
4	Kaktovik	Arctic Slope
2	Kalifornsky	Kenai Peninsula
4	Kaltag	Interior
4	Karluk	Kodiak
3	Kasaan	Southeast
4	Kasigluk	Yukon-Kuskokwim

<u>Code</u>	<u>Community</u>	<u>Region</u>
2	Kasilof	Kenai Peninsula
2	Kenai	Kenai Peninsula
3	Kenny Lake	Copper River/PWS
1	Ketchikan	Southeast
4	Kiana	Northwest Arctic
4	King Cove	Aleutians and Pribilofs
3	King Salmon	Bristol Bay
4	Kipnuk	Yukon-Kuskokwim
4	Kivalina	Northwest Arctic
3	Klawock	Southeast
3	Klukwan	Southeast
2	Knik	Anchorage/Mat-Su
4	Kobuk	Northwest Arctic
1	Kodiak	Kodiak
4	Kokhanok	Bristol Bay
4	Koliganek	Bristol Bay
4	Kongiganak	Yukon-Kuskokwim
4	Kotlik	Yukon-Kuskokwim
1	Kotzebue	Northwest Arctic
4	Koyuk	Norton Sound
4	Koyukuk	Interior
4	Kupreanof	Southeast
4	Kwethluk	Yukon-Kuskokwim
4	Kwigillingok	Yukon-Kuskokwim
4	Lake Minchumina	Interior
4	Larsen Bay	Kodiak
2	Lazy Mountain	Anchorage/Mat-Su
4	Levelock	Bristol Bay
3	Lignite	Interior
4	Lime Village	Yukon-Kuskokwim

Appendix D. Access to Care Coding for Alaskan Communities (continued)

<u>Code</u>	<u>Community</u>	<u>Region</u>
4	Little Diomedede	Norton Sound
4	Lower Kalskag	Yukon-Kuskokwim
2	Lutak	Southeast
3	Manley Hot Springs	Interior
4	Manokotak	Bristol Bay
4	Marshall	Yukon-Kuskokwim
2	McCarthy	Copper River/PWS
4	McGrath	Interior
3	McKinley Park	Interior
2	Meadow Lakes	Anchorage/Mat-Su
4	Mekoryuk	Yukon-Kuskokwim
3	Mendeltna	Copper River/PWS
2	Mentasta Lake	Copper River/PWS
3	Metlakatla	Southeast
4	Meyers Chuck	Southeast
4	Minto	Interior
2	Moose Creek	Interior
2	Moose Pass	Kenai Peninsula
3	Mosquito Lake	Southeast
4	Mountain Village	Yukon-Kuskokwim
3	Naknek	Bristol Bay
4	Nanwalek	Kenai Peninsula
4	Napakiak	Yukon-Kuskokwim
4	Napaskiak	Yukon-Kuskokwim
3	Naukati Bay	Southeast
4	Nelson Lagoon	Aleutians and Pribilofs
2	Nenana	Interior
4	New Stuyahok	Bristol Bay
4	Newhalen	Bristol Bay
4	Newtok	Yukon-Kuskokwim

<u>Code</u>	<u>Community</u>	<u>Region</u>
4	Nightmute	Yukon-Kuskokwim
2	Nikiski	Kenai Peninsula
2	Nikolaevsk	Kenai Peninsula
4	Nikolai	Interior
4	Nikolski	Aleutians and Pribilofs
2	Ninilchik	Kenai Peninsula
4	Noatak	Northwest Arctic
1	Nome	Norton Sound
4	Nondalton	Bristol Bay
4	Noorvik	Northwest Arctic
2	North Pole	Interior
3	Northway	Interior
3	Northway Junction	Interior
4	Nuiqsut	Arctic Slope
4	Nulato	Interior
4	Nunam Iqua	Yukon-Kuskokwim
4	Nunapitchuk	Yukon-Kuskokwim
4	Old Harbor	Kodiak
4	Oscarville	Yukon-Kuskokwim
4	Ouzinkie	Kodiak
1	Palmer	Anchorage/Mat-Su
3	Paxson	Copper River/PWS
4	Pedro Bay	Bristol Bay
3	Pelican	Southeast
4	Perryville	Bristol Bay
1	Petersburg	Southeast
4	Pilot Point	Bristol Bay
4	Pilot Station	Yukon-Kuskokwim
4	Pitka's Point	Yukon-Kuskokwim
3	Platinum	Yukon-Kuskokwim

Appendix D. Access to Care Coding for Alaskan Communities (continued)

<u>Code</u>	<u>Community</u>	<u>Region</u>
2	Pleasant Valley	Interior
4	Point Baker	Southeast
4	Point Hope	Arctic Slope
4	Point Lay	Arctic Slope
4	Port Alexander	Southeast
4	Port Alsworth	Bristol Bay
4	Port Clarence	Norton Sound
4	Port Graham	Kenai Peninsula
4	Port Heiden	Bristol Bay
4	Port Lions	Kodiak
4	Port Protection	Southeast
2	Primrose	Kenai Peninsula
4	Prudhoe Bay	Arctic Slope
4	Quinhagak	Yukon-Kuskokwim
4	Rampart	Interior
4	Red Devil	Yukon-Kuskokwim
2	Ridgeway	Kenai Peninsula
4	Ruby	Interior
4	Russian Mission	Yukon-Kuskokwim
4	Saint George	Aleutians and Pribilofs
4	Saint Mary's	Yukon-Kuskokwim
3	Saint Michael	Norton Sound
4	Saint Paul Island	Aleutians and Pribilofs
2	Salamatof	Kenai Peninsula
2	Salcha	Interior
4	Sand Point	Aleutians and Pribilofs
4	Savoonga	Norton Sound
2	Saxman	Southeast
4	Scammon Bay	Yukon-Kuskokwim
4	Selawik	Northwest Arctic
3	Seldovia	Kenai Peninsula
1	Seward	Kenai Peninsula

<u>Code</u>	<u>Community</u>	<u>Region</u>
4	Shageluk	Interior
4	Shaktolik	Norton Sound
4	Shishmaref	Norton Sound
4	Shungnak	Northwest Arctic
1	Sitka	Southeast
3	Skagway	Southeast
4	Skwentna	Anchorage/Mat-Su
3	Slana	Copper River/PWS
4	Sleetmute	Yukon-Kuskokwim
1	Soldatna	Kenai Peninsula
4	South Naknek	Bristol Bay
4	Stebbins	Norton Sound
2	Sterling	Kenai Peninsula
4	Stevens Village	Interior
4	Stony River	Yukon-Kuskokwim
2	Sutton	Anchorage/Mat-Su
4	Takotna	Interior
2	Talkeetna	Anchorage/Mat-Su
3	Tanacross	Interior
4	Tanana	Interior
4	Tatitlek	Copper River/PWS
4	Tazlina	Copper River/PWS
3	Teller	Norton Sound
4	Tenakee Springs	Southeast
4	Tetlin	Interior
3	Thorne Bay	Southeast
3	Togiak	Bristol Bay
3	Tok	Interior
4	Toksook Bay	Yukon-Kuskokwim
3	Tonsina	Copper River/PWS
2	Trapper Creek	Anchorage/Mat-Su
4	Tuluksak	Yukon-Kuskokwim

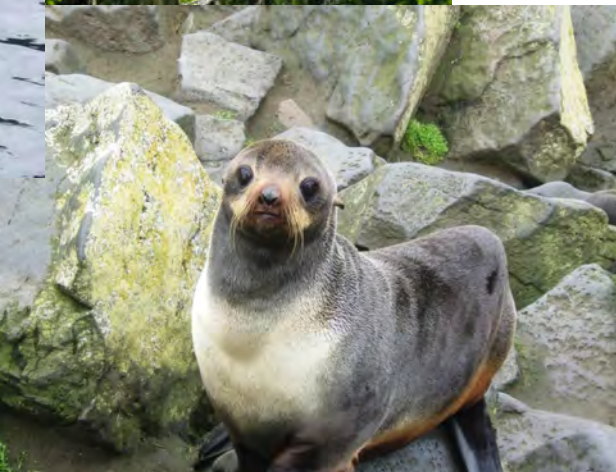
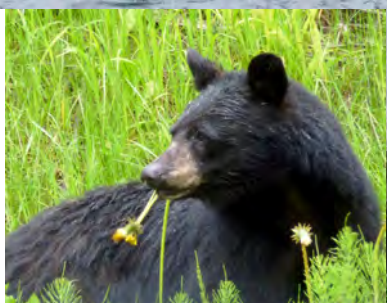
Appendix D. Access to Care Coding for Alaskan Communities (continued)

<u>Code</u>	<u>Community</u>	<u>Region</u>
4	Tuntutuliak	Yukon-Kuskokwim
4	Tununak	Yukon-Kuskokwim
4	Twin Hills	Bristol Bay
2	Two Rivers	Interior
4	Tyonek	Kenai Peninsula
4	Unalakleet	Norton Sound
4	Unalaska	Aleutians and Pribilofs
4	Upper Kalskag	Yukon-Kuskokwim
1	Valdez	Copper River/PWS
4	Venetie	Interior
4	Wainwright	Arctic Slope

<u>Code</u>	<u>Community</u>	<u>Region</u>
4	Wales	Norton Sound
1	Wasilla	Anchorage/Mat-Su
3	Whale Pass	Southeast
4	White Mountain	Norton Sound
3	Whitstone Logging Camp	Southeast
3	Whittier	Copper River/PWS
2	Willow	Anchorage/Mat-Su
4	Wiseman	Interior
2	Womens Bay	Kodiak
1	Wrangell	Southeast
4	Yakutat	Southeast



Photos by H. Strayer



Appendix E. Figures and Tables
FIGURES

Figure 1.	Leading Causes of Death by Age Group, Alaska Native People, 2001-2010.....	7
Figure 2.	Leading Causes of Injury Death by Region, Alaska Native People, 2002-2011.....	8
Figure 3.	Leading Causes of Injury Death by Age, Alaska Native People, 2002-2011.....	8
Figure 4.	Leading Causes of Injury Death, Alaska Native Females, All Regions, 2002-2011.....	9
Figure 5.	Leading Causes of Injury Death Alaska Native Males, All Regions, 2002-2011	9
Figure 6.	Intentional Injury Death Rate †† by Region, Alaska Native People, 2002-2011.....	10
Figure 7.	Intentional Injury Death Rate †† by Gender, Race and Year, 1992-2011.....	10
Figure 8.	Intentional Injury Death by Type, Alaska Native People, All Ages, 2002-2011	11
Figure 9.	Unintentional Injury Death Rate †† by Region, Alaska Native People, 2002-2011	12
Figure 10.	Unintentional Injury Death Rate †† by Gender, Race and Year, 1992-2011	12
Figure 11.	Unintentional Injury Death by Type, Alaska Native People, All Ages, 2002-2011.....	13
Figure 12.	Suicide Death Rate †† by Region, Alaska Native People, 2002-2011	14
Figure 13.	Suicide Death Rate †† by Gender, Race and Year, 1992-2011	14
Figure 14.	Suicide Death by Type, Alaska Native People, All Ages, 2002-2011.....	15
Figure 15.	Poisoning Death Rate †† by Region, Alaska Native People, 2002-2011.....	16
Figure 16.	Poisoning Death Rate †† by Gender, Race and Year, 1992-2011.....	16
Figure 17.	Poisoning Death by Type, Alaska Native People, All Ages, 2002-2011.....	17
Figure 18.	Drowning Death Rate †† by Region, Alaska Native People, 2002-2011.....	18
Figure 19.	Drowning Death Rate †† by Gender, Race and Year, 1992-2011	18
Figure 20.	Drowning Death by Type, Alaska Native People, All Ages, 2002-2011.....	19
Figure 21.	Motor Vehicle Death Rate †† by Region, Alaska Native People, 2002-2011	20
Figure 22.	Motor Vehicle Death Rate †† by Gender, Race and Year, 1992-2011.....	20
Figure 23.	Motor Vehicle Death by Type, Alaska Native People, All Ages, 2002-2011	21
Figure 24.	Homicide Death Rate †† by Region, Alaska Native People, 2002-2011	22
Figure 25.	Homicide Death Rate †† by Gender, Race and Year, 1992-2011	22
Figure 26.	Homicide Death by Type, Alaska Native People, All Ages, 2002-2011	23
Figure 27.	Leading Causes of Injury Hospitalization by Region, All Alaska Native People, 2002-2011* .	26
Figure 28.	Leading Causes of Injury Hospitalization by Age Group, All Alaska Native People, 2002-2011.....	26
Figure 29.	Leading Causes of Injury Hospitalization, Alaska Native Males, All Regions, 2002-2011.....	27
Figure 30.	Leading Causes of Injury Hospitalization, Alaska Native Females, All Regions, 2002-2011 ..	27
Figure 31.	Intentional Injury Hospitalization Rate§ by Region, Alaska Native People, 2002-2011	28
Figure 32.	Intentional Injury Hospitalization Rate§ by Gender, Race and Year, 1992-2011	28
Figure 33.	Intentional Injury Hospitalization by Type, Alaska Native People, All Ages, 2002-2011	29

Appendix E. Figures and Tables (continued)

Figure 34.	Unintentional Hospitalization Rate§ by Region, Alaska Native People, 2002-2011.....	30
Figure 35.	Unintentional Injury Hospitalization Rate§ by Gender, Race and Year, 1992-2011.....	30
Figure 36.	Unintentional Injury Hospitalization by Type, Alaska Native People, All Ages, 2002-2011 ...	31
Figure 37.	Falls Hospitalization Rate§ by Region, Alaska Native People, 2002-2011	32
Figure 38.	Falls Hospitalization Rate§ by Gender, Race and Year, 1992-2011	32
Figure 39.	Falls Hospitalization by Type, Alaska Native People, All Ages, 2002-2011	33
Figure 40.	Suicide Attempt or Self Harm Hospitalization Rate§ by Region, Alaska Native People, 2002-2010.....	34
Figure 41.	Suicide Attempt or Self Harm Hospitalization Rate§ by Gender, Race and Year, 1992-2010.....	34
Figure 42.	Suicide Attempt or Self Harm Hospitalization by Type, Alaska Native People, All Ages, 2002-2010	35
Figure 43.	Assault Hospitalization Rate§ by Region, Alaska Native People, 2002-2011	36
Figure 44.	Assault Hospitalization Rate§ by Gender, Race and Year, 1992-2011	36
Figure 45.	Assault Hospitalization by Type, Alaska Native People, All Ages, 2002-2011	37
Figure 46.	Motor Vehicle Hospitalization Rate§ by Region, Alaska Native People, 2002-2011.....	38
Figure 47.	Motor Vehicle Hospitalization Rate§ by Gender, Race and Year, 1992-2011	38
Figure 48.	Motor Vehicle Hospitalization by Type, Alaska Native People, All Ages, 2002-2011	39
Figure 49.	All-Terrain Vehicle Hospitalization Rate§ by Region, Alaska Native People, 2002-2011	40
Figure 50.	All-Terrain Vehicle Hospitalization Rate§ by Gender, Race and Year, 1992-2011	40
Figure 51.	All-Terrain Vehicle Hospitalization by Type, Alaska Native People, All Ages, 2002-2011	41
Figure 52.	Snowmachine Hospitalization Rate§ by Region, Alaska Native People, 2002-2011	42
Figure 53.	Snowmachine Hospitalization Rate§ by Gender, Race and Year, 1992-2011	42
Figure 54.	Snowmachine Hospitalization by Type, Alaska Native People, All Ages, 2002-2011	43
Figure 55.	Alaska Native Unintentional Poisoning Death Rate, Type and Year, 1996-2011	71
Figure 56.	Self-Inflicted Drug Poisoning Hospitalization Rate, Race and Year, 1992-2010	73
Figure 57.	Rate of Hospitalizations Associated with Drugs or Alcohol by Race, Alaska, 1992-2011	75

TABLES

Table 1.	Regions by Tribal Health Organizations and Census Areas.....	45
Table 2.	Leading Causes of Aleutians and Pribilofs Injury Hospitalizations, 1992-2011	46
Table 3.	Leading Causes of Aleutians and Pribilofs Injury Deaths, 1992-2011.....	47
Table 4.	Leading Causes of Anchorage and Matanuska-Susitna Injury Hospitalizations, 1992-2011 ..	48
Table 5.	Leading Causes of Anchorage and Matanuska-Susitna Injury Deaths, 1992-2011	49
Table 6.	Leading Causes of Arctic Slope Injury Hospitalizations, 1992-2011	50
Table 7.	Leading Causes of Arctic Slope Injury Deaths, 1992-2011.....	51
Table 8.	Leading Causes of Bristol Bay Injury Hospitalizations, 1992-2011	52

Appendix E. Figures and Tables (continued)

Table 9.	Leading Causes of Bristol Bay Injury Deaths, 1992-2011.....	53
Table 10.	Leading Causes of Copper River/Prince William Sound Injury Hospitalizations, 1992-2011	54
Table 11.	Leading Causes of Copper River/Prince William Sound Injury Deaths, 1992-2011	55
Table 12.	Leading Causes of Interior Injury Hospitalization, 1992-2011.....	56
Table 13.	Leading Causes of Interior Injury Deaths, 1992-2011.....	57
Table 14.	Leading Causes of Kenai Peninsula Injury Hospitalization, 1992-2011	58
Table 15.	Leading Causes of Kenai Peninsula Injury Deaths, 1992-2011	59
Table 16.	Leading Causes of Kodiak Injury Hospitalization, 1992-2011	60
Table 17.	Leading Causes of Kodiak Injury Deaths, 1992-2011.....	61
Table 18.	Leading Causes of Northwest Arctic Injury Hospitalization, 1992-2011	62
Table 19.	Leading Causes of Northwest Arctic Injury Deaths, 1992-2011	63
Table 20.	Leading Causes of Norton Sound Injury Hospitalization, 1992-2011	64
Table 21.	Leading Causes of Norton Sound Injury Deaths, 1992-2011	65
Table 22.	Leading Causes of Southeast Injury Hospitalization, 1992-2011.....	66
Table 23.	Leading Causes of Southeast Injury Deaths, 1992-2011.....	67
Table 24.	Leading Causes of Yukon-Kuskokwim Injury Hospitalization, 1992-2011	68
Table 25.	Leading Causes of Yukon-Kuskokwim Injury Deaths, 1992-2011	69
Table 26	Frequency of Unintentional Poisoning Hospitalization among Alaska Native Children by Poison Type (N = 549) - Alaska, 2002-2011	72
Table 27.	Alaska Native Self-Inflicted Drug Poisoning Hospitalization Rates, 2002-2010.....	73
Table 28.	Alaska Native Hospitalizations with Known or Suspected Alcohol or Drug Involvement by Mechanism, 2002-2011	74
Table 29.	Alaska Native Hospitalizations with Alcohol or Drug Involvement by Region, 2002-2011	75
Table 30.	Distribution of Population in Alaska by Access to Care Category and Race, 2010.....	76
Table 31.	Alaska Native Injury Hospitalizations, Access to Care by Mechanism, 2002-2011	77
Table 32.	Alaska Native Injury Deaths, Access to Care by Mechanism, 2002-2011.....	77

DATA TABLES

Table B-1.	Intentional Injury Death Rate ⁺⁺ by Region, Alaska Native People, 2002-2011	84
Table B-2.	Intentional Injury Death Rate ⁺⁺ by Gender, Race and Year, 1992-2011.....	85
Table B-3.	Intentional Injury Death by Type, Alaska Native People, All Ages, 2002-2011	85
Table B-4.	Intentional Injury Death Rate ⁺⁺ , Gender and Age Group, Alaska Native People, 2002-2011.....	86
Table B-5.	Unintentional Injury Death Rate ⁺⁺ by Region, Alaska Native People, 2002-2011	86
Table B-6.	Unintentional Injury Death Rate ⁺⁺ by Gender, Race and Year, 1992-2011.....	87
Table B-7.	Unintentional Injury Death by Type, Alaska Native People, All Ages, 2002-2011.....	87
Table B-8.	Unintentional Injury Death Rate ⁺⁺ , Gender and Age Group, Alaska Native People, 2002-2011.....	88

Appendix E. Figures and Tables (continued)

Table B-9. Suicide Death Rate ^{††} by Region, Alaska Native People, 2002-2011	88
Table B-10. Suicide Death Rate ^{††} by Gender, Race and Year, 1992-2011	89
Table B-11. Suicide Death by Type, Alaska Native People, All Ages, 2002-2011.....	89
Table B-12. Suicide Death Rate ^{††} , Gender and Age Group, Alaska Native People, 2002-2011.....	90
Table B-13. Poisoning Death Rate ^{††} by Region, Alaska Native People, 2002-2011.....	90
Table B-14. Poisoning Death Rate ^{††} by Gender, Race and Year, 1992-2011.....	91
Table B-15. Poisoning Death by Type, Alaska Native People, All Ages, 2002-2011.....	91
Table B-16. Poisoning Death Rate ^{††} , Gender and Age Group, Alaska Native People, 2002-2011	92
Table B-17. Drowning Death Rate ^{††} by Region, Alaska Native People, 2002-2011.....	92
Table B-18. Drowning Death Rate ^{††} by Gender, Race and Year, 1992-2011.....	93
Table B-19. Drowning Death by Type, Alaska Native People, All Ages, 2002-2011.....	93
Table B-20. Drowning Death Rate ^{††} , Gender and Age Group, Alaska Native People, 2002-2011	94
Table B-21. Motor Vehicle Death Rate ^{††} by Region, Alaska Native People, 2002-2011	94
Table B-22. Motor Vehicle Death Rate ^{††} by Gender, Race and Year, 1992-2011	95
Table B-23. Motor Vehicle Death by Type, Alaska Native People, All Ages, 2002-2011	95
Table B-24. Motor Vehicle Death Rate ^{††} , Gender and Age Group, Alaska Native People, 2002-2011 ..	96
Table B-25. Homicide Death Rate ^{††} by Region, Alaska Native People, 2002-2011	96
Table B-26. Homicide Death Rate ^{††} by Gender, Race and Year, 1992-2011	97
Table B-27. Homicide Death by Type, Alaska Native People, All Ages, 2002-2011	97
Table B-28. Homicide Death Rate ^{††} , Gender and Age Group, Alaska Native People, 2002-2011.....	98
Table B-29. Intentional Hospitalization Rate [§] by Region, Alaska Native People, 2002-2011	98
Table B-30. Intentional Injury Hospitalization Rate [§] by Gender, Race and Year, 1992-2011	99
Table B-31. Intentional Injury Hospitalization by Type, Alaska Native People, All Ages, 2002-2011	99
Table B-32. Intentional Injury Hospitalization Rate [§] , Gender and Age Group, Alaska Native People, 2002-2011.....	100
Table B-33. Unintentional Hospitalization Rate [§] by Region, Alaska Native People, 2002-2011.....	100
Table B-34. Unintentional Injury Hospitalization Rate [§] by Gender, Race and Year, 1992-2011.....	101
Table B-35. Unintentional Injury Hospitalization by Type, Alaska Native People, All Ages, 2002-2011 .	101
Table B-36. Unintentional Injury Hospitalization Rate [§] , Gender and Age Group, Alaska Native People, 2002-2011.....	102
Table B-37. Falls Hospitalization Rate [§] by Region, Alaska Native People, 2002-2011	102
Table B-38. Falls Hospitalization Rate [§] by Gender, Race and Year, 1992-2011	103
Table B-39. Falls Hospitalization by Type, Alaska Native People, All Ages, 2002-2011.....	103
Table B-40. Falls Hospitalization Rate [§] , Gender and Age Group, Alaska Native People, 2002-2011.....	104

Appendix E. Figures and Tables (continued)

Table B-41. Suicide Attempt or Self Harm Hospitalization Rate [§] by Region, Alaska Native People, 2002-2010	104
Table B-42. Suicide Attempt or Self Harm Hospitalization Rate [§] by Gender, Race and Year, 1992-2010	105
Table B-43. Suicide Attempt or Self Harm Hospitalization by Type, Alaska Native People, All Ages, 2002-2010	105
Table B-44. Suicide Attempt or Self Harm Hospitalization Rate [§] , Gender and Age Group, Alaska Native People, 2002-2010	106
Table B-45. Assault Hospitalization Rate [§] by Region, Alaska Native People, 2002-2011	106
Table B-46. Assault Hospitalization Rate [§] by Gender, Race and Year, 1992-2011	107
Table B-47. Assault Hospitalization by Type, Alaska Native People, All Ages, 2002-2011	107
Table B-48. Assault Hospitalization Rate [§] , Gender and Age Group, Alaska Native People, 2002-2011 .	108
Table B-49. Motor Vehicle Hospitalization Rate [§] by Region, Alaska Native People, 2002-2011	108
Table B-50. Motor Vehicle Hospitalization Rate [§] by Gender, Race and Year, 1992-2011	109
Table B-51. Motor Vehicle Hospitalization by Type, Alaska Native People, All Ages, 2002-2011	109
Table B-52. Motor Vehicle Hospitalization Rate [§] , Gender and Age Group, Alaska Native People, 2002-2011	110
Table B-53. All-Terrain Vehicle Hospitalization Rate [§] by Region, Alaska Native People, 2002-2011	110
Table B-54. All-Terrain Vehicle Hospitalization Rate [§] by Gender, Race and Year, 1992-2011	111
Table B-55. All-Terrain Vehicle Hospitalization by Type, Alaska Native People, All Ages, 2002-2011	111
Table B-56. All-Terrain Vehicle Hospitalization Rate [§] , Gender and Age Group, Alaska Native People, 2002-2011	112
Table B-57. Snowmachine Hospitalization Rate [§] by Region, Alaska Native People, 2002-2011	112
Table B-58. Snowmachine Hospitalization Rate [§] by Gender, Race and Year, 1992-2011	113
Table B-59. Snowmachine Hospitalization by Type, Alaska Native People, All Ages, 2002-2011	113
Table B-60. Snowmachine Hospitalization Rate [§] , Gender and Age Group, Alaska Native People, 2002-2011	114
Table B-61. Alaska Unintentional Poisoning Death Rate ⁺⁺ by Race, Alcohol and Drugs Combined, 2002-2011	114
Table B-62. Alaska Native Unintentional Poisoning Death Rate ⁺⁺ , Type and Year, 1996-2011	114
Table B-63. Self-Inflicted Drug Poisoning Hospitalization Rate [§] by Race and Year, 1992-2010	115
Table B-64. Alaska Native Self-Inflicted Drug Poisoning Hospitalization Rate [§] by Gender, 2002-2010 ..	115
Table B-65. Self-Inflicted Drug Poisoning Hospitalization Rate [§] by Race and Year, 1992-2010	115

Appendix F. Glossary of Terms

Age-adjusted rate

The application of age-specific rates in a population of interest to a standardized age distribution in order to eliminate differences in observed rates that result from age differences in population composition. This adjustment is usually done when comparing two or more populations at one point in time or one population at two or more points in time.

Intentional Injuries

Intentional injuries are purposeful or deliberate harm caused by one person to themselves or another person. The most common categories of intentional injuries are suicide/suicide attempt, homicide, assault and abuse.

Rate ratio

A comparison of two rates to show how many times larger or smaller one is compared to the other. Generally, the rate in the population of interest is compared with that of a standard population (for which data are available and published). A rate ratio of less than one means that the rate in the population of interest is lower than that of the comparison population. For example, a rate ratio of 0.8 means that the rate in the population of interest is 20 percent lower than in the comparison population. Conversely, a rate ratio of 1.2 means that the rate in the population of interest is 20 percent higher than in the comparison population.

Unadjusted rate

An estimate of the proportion of a population that experiences the event of interest (e.g. assault hospitalization rate) during a specified period. It is calculated by dividing the number of observations by the appropriate population multiplied by 100,000 (or other appropriate multiplier). When interpreting these rates, remember that rates may be affected by differences in population structures between areas. For example, if an area had a high concentration of older people, this alone would result in higher unadjusted death rates for many causes.

Unintentional Injuries

Unintentional injuries are all injuries where the harmful outcome was not intended or planned, or was not caused on purpose. The term “accident” is not used in this report because it implies that the injury cannot be prevented.